

# SIUI

## SR-2000 System Composition

Component	Specifications and Description
<b>X-Ray Transmitter</b>	Power: 1.6kW Output tube voltage: 40kV~100kV Output tube current: 15/20mA Current time product: 0.4~50mAs Built-in battery power supply; optional configuration: wireless transmission and touch screen
<b>X-Ray Digital Detector</b>	Configuration 1: 12"×10", spatial resolution 3.9 lp/mm pixel matrix 2080×2560
	Configuration 2: 11"×9", spatial resolution 3.1 lp/mm pixel matrix 1476×1790
<b>Image Acquisition Workstation (Suggested Configuration)</b>	2.4G dual-core CPU/ 4G RAM/ 500G HD, 46,000 or more images can be saved
<b>Digital Image Acquisition Software</b>	patient registration, image acquisition & processing, trim, negative, image inversion, rotation, zoom, annotation, shifting, display, image window width/level adjustment, DICOM image transfer, Worklist function, mini PACS system

## SR-2000

Veterinary Portable DR System



# SIUI

Shantou Institute of Ultrasonic Instruments Co., Ltd.

Add: #77, Jinsha Road, Shantou 515041, Guangdong, China

Tel: +86-754-88250150 Fax: +86-754-88251499

E-mail: [siui@siui.com](mailto:siui@siui.com) Website: <http://www.siui.com>

Specifications and appearance are subject to change without prior notice.

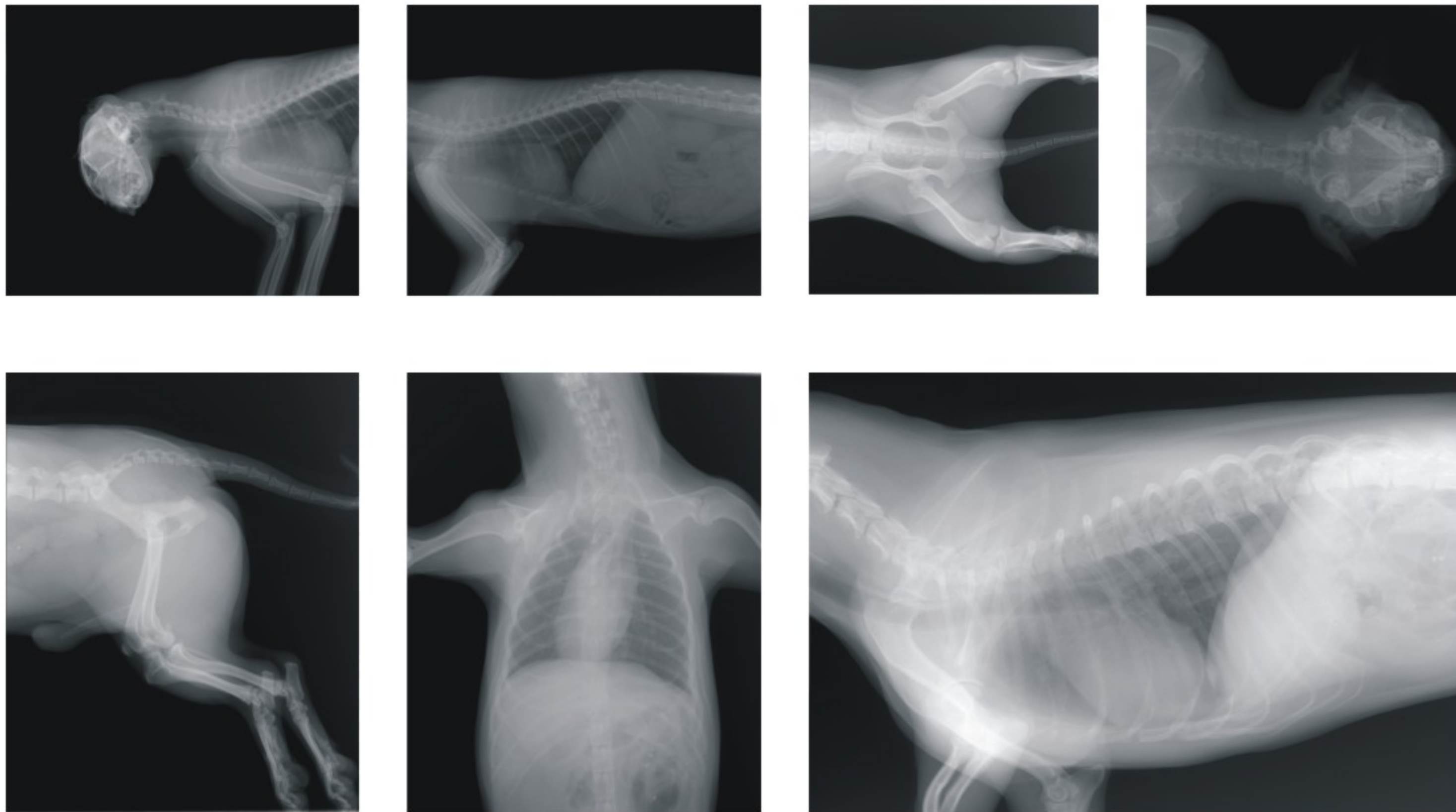
DCY2.782.EN.SR-2000.Red.CY/6A01



## Veterinary Portable DR System

### Product Features and Intended Use

The veterinary portable DR system SR-2000, integrated with functions such as acquisition, transmission and processing of X-ray images, diagnosis and patient history management, presents high-definition quality images quickly. It is easy to use and applicable to various mobile or stationary sites of veterinary medical facilities.



### Specifications and Configuration

#### X-Ray Detector Specifications

- System effective imaging area: 264mm×325mm or 234mm×284mm
- Spatial resolution: 3.9 lp/mm or 3.1 lp/mm
- Acquisition pixel A/D conversion: 14 bits
- Pixel matrix: 2080×2560 or 1476×1790, 14-bit grayscale
- Efficient and intelligent digital image processing, with imaging time less than 3s
- Image output format: DICOM, BMP, JPG or TIF

#### X-Ray Transmitter Specifications

- Built-in battery power supply; optional configuration: wireless transmission and touch screen
- High precision exposure parameter control, which ensures image clarity and sharpness
- Efficient self-failure protection and self-diagnosis for convenient service



### Main Software Features

- User-friendly operation interface
- Manual/ auto adjustment of window width/ window level
- Positive/negative inversion, image inversion and rotation, zoom, trim, annotation, image magnifier
- Multiple image formats for display and conversion
- Multiple window review
- Practical report template, with one or more images inserted as required
- Mini PACS system

